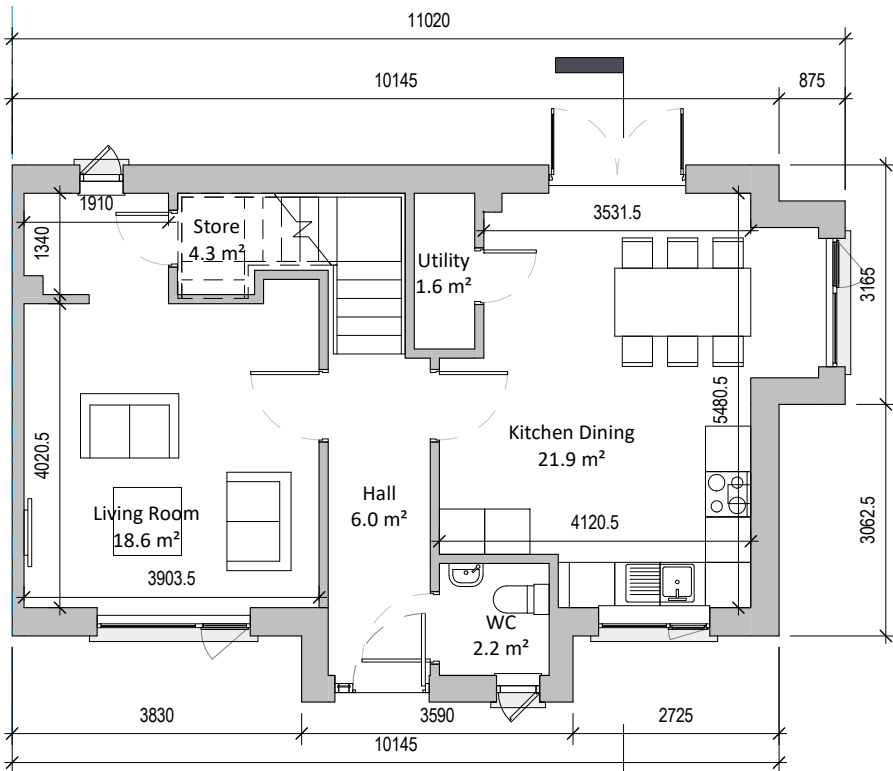
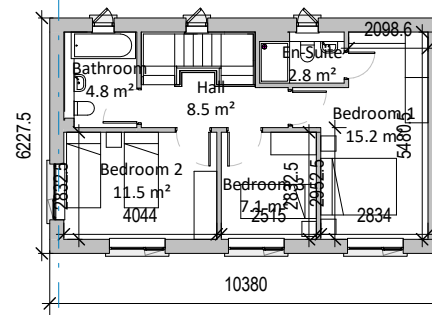


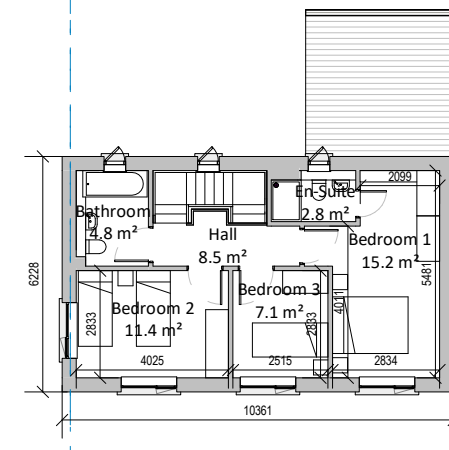
2 H03B Level 01
1 : 100



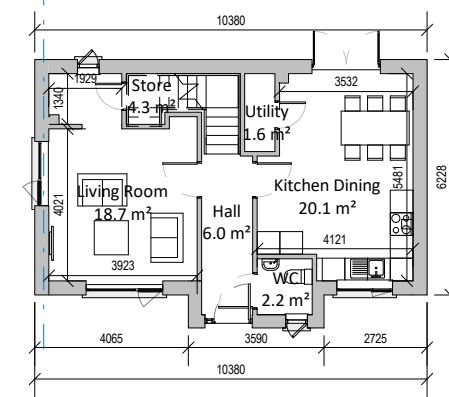
1 H03B Level 00
1 : 100



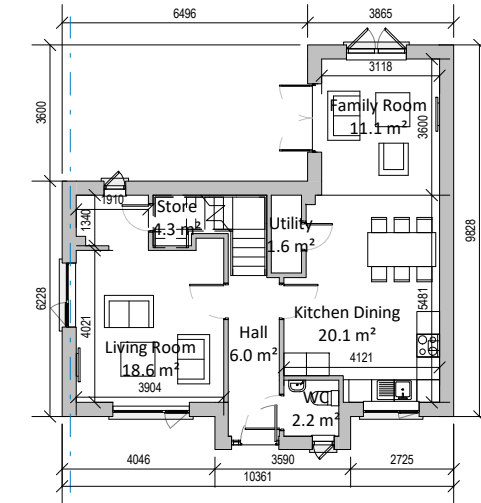
3 H03L Level 01
1 : 200



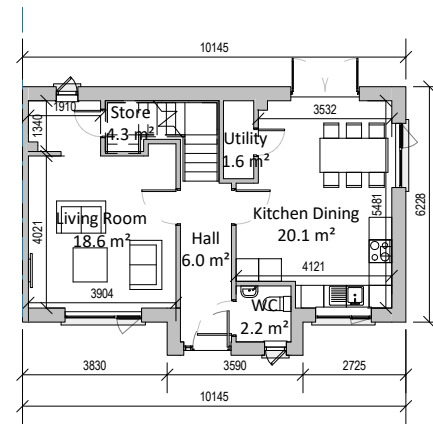
4 H03AL Level 01
1 : 200



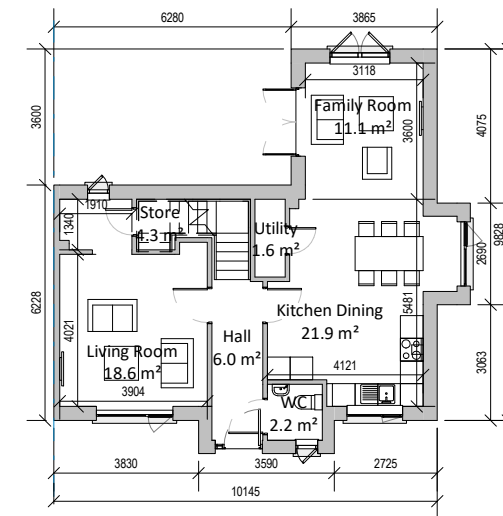
5 H03L Level 00
1 : 200



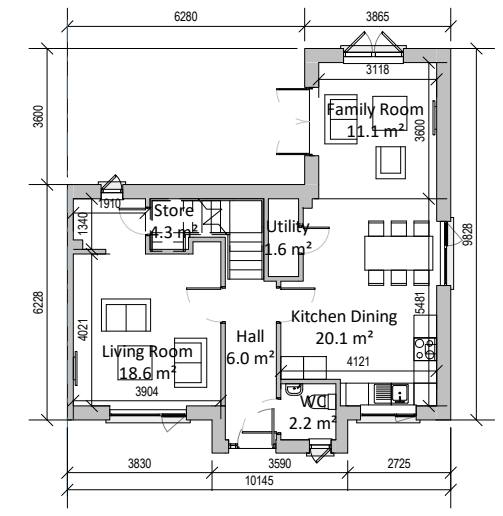
6 H03AL Level 00
1 : 200



7 H03R Level 00
1 : 200



8 Type 3 Extended End of Terrace with bay window
1 : 200



9 H03AR Level 00
1 : 200

H03 (End of Terrace) - Plans



Key Plan

Revision Description	Date	Rev. No.	Issued by
Issued for Planning	09.10.2019	1	an/tt

Figured dimensions only to be used. This drawing is copyright of O'Mahony Pike Architects Ltd. All information is shared as per approved use in accordance with BS1192(2007) + A2(2016), Table 5; Standard Codes for Suitability of Models and Documents. If the 'Status' field is empty, this information has been shared at SO - WIP.



architecture | urban design | Dublin | Cork
 email: info@omahonypike.com | The Chapel | 26 South Mall
 tel: +353 1 202 7400 | Mount St. Anne's | Cork City
 fax: +353 1 283 0822 | Milltown, Dublin 6 | Co. Cork
 www.omahonypike.com | D06 XNS2 Ireland | T12 R2RV Ireland

Project: Woodbrook Phase 1
 Location: Woodbrook
 Client: Aeval

Drawing Title: H03 (End of Terrace) - Plans
 Drawing No.: 1618-OMP-H03-ZZ-DR-A-11001

Project No.: 1618
 Project Lead: SD
 Drawn By: TT
 Model No.: 1618-OMP-00-ZZ-M3-A-0001
 Purpose: Planning
 Scale @ A3: As indicated
 Date Printed: 09.10.2019
 Current Rev.: 1
 Status: SO